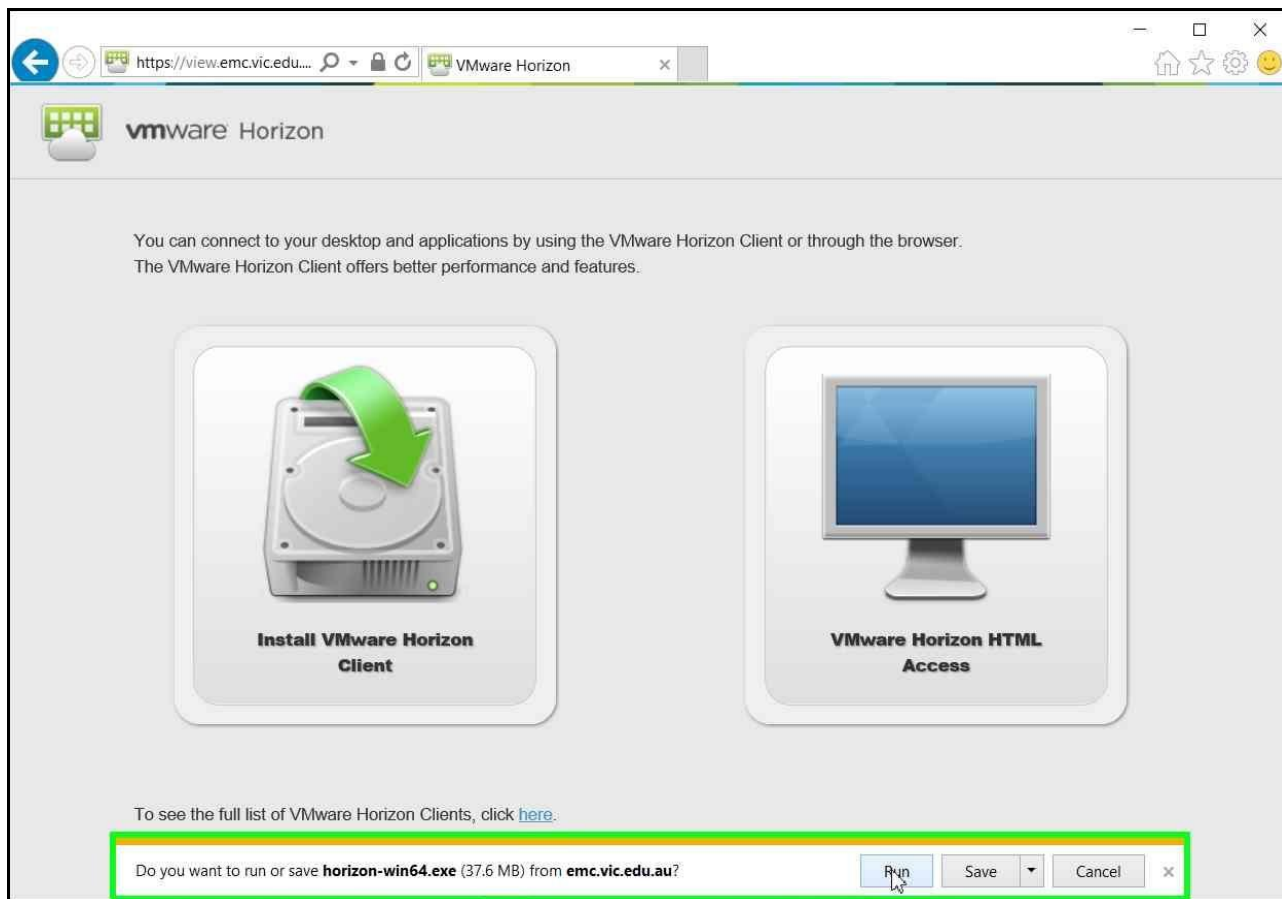
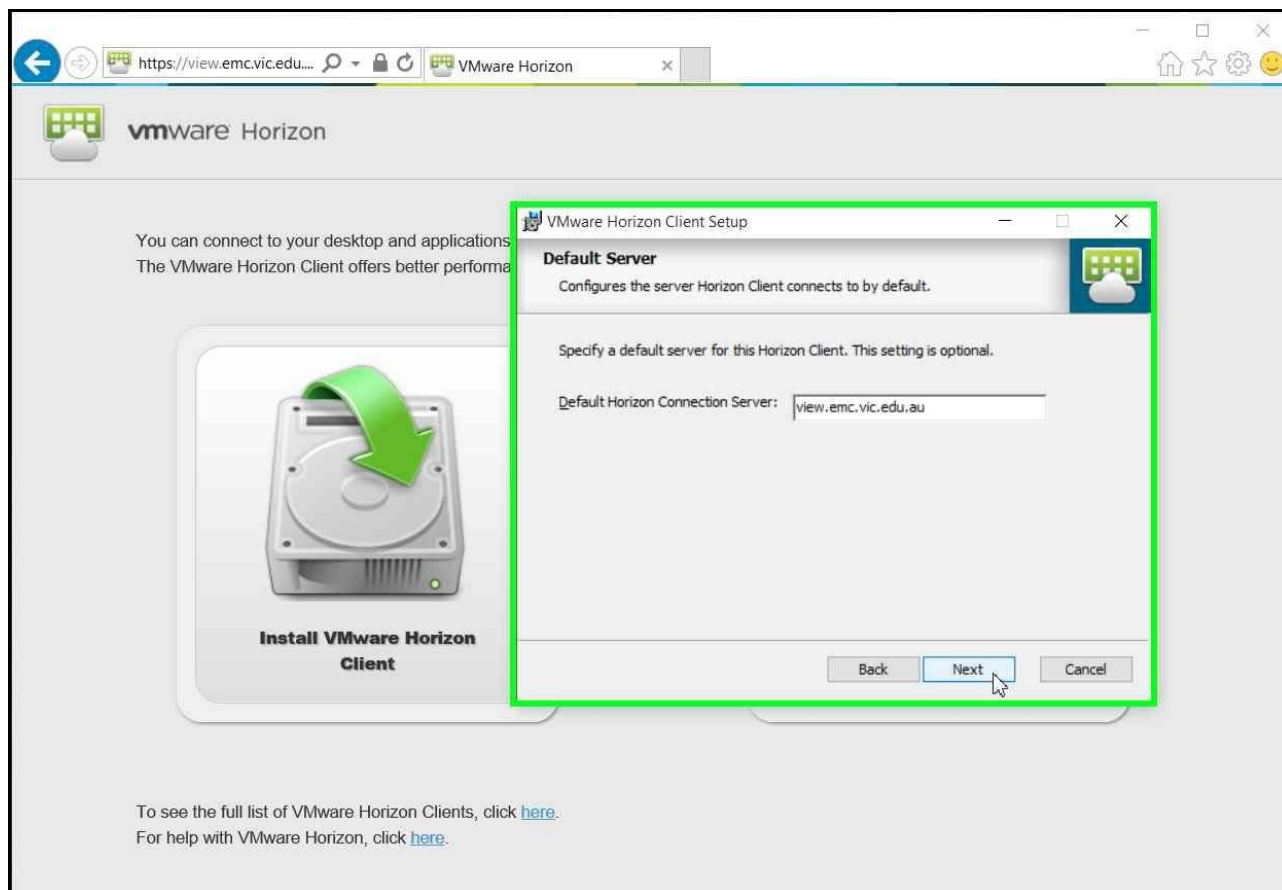


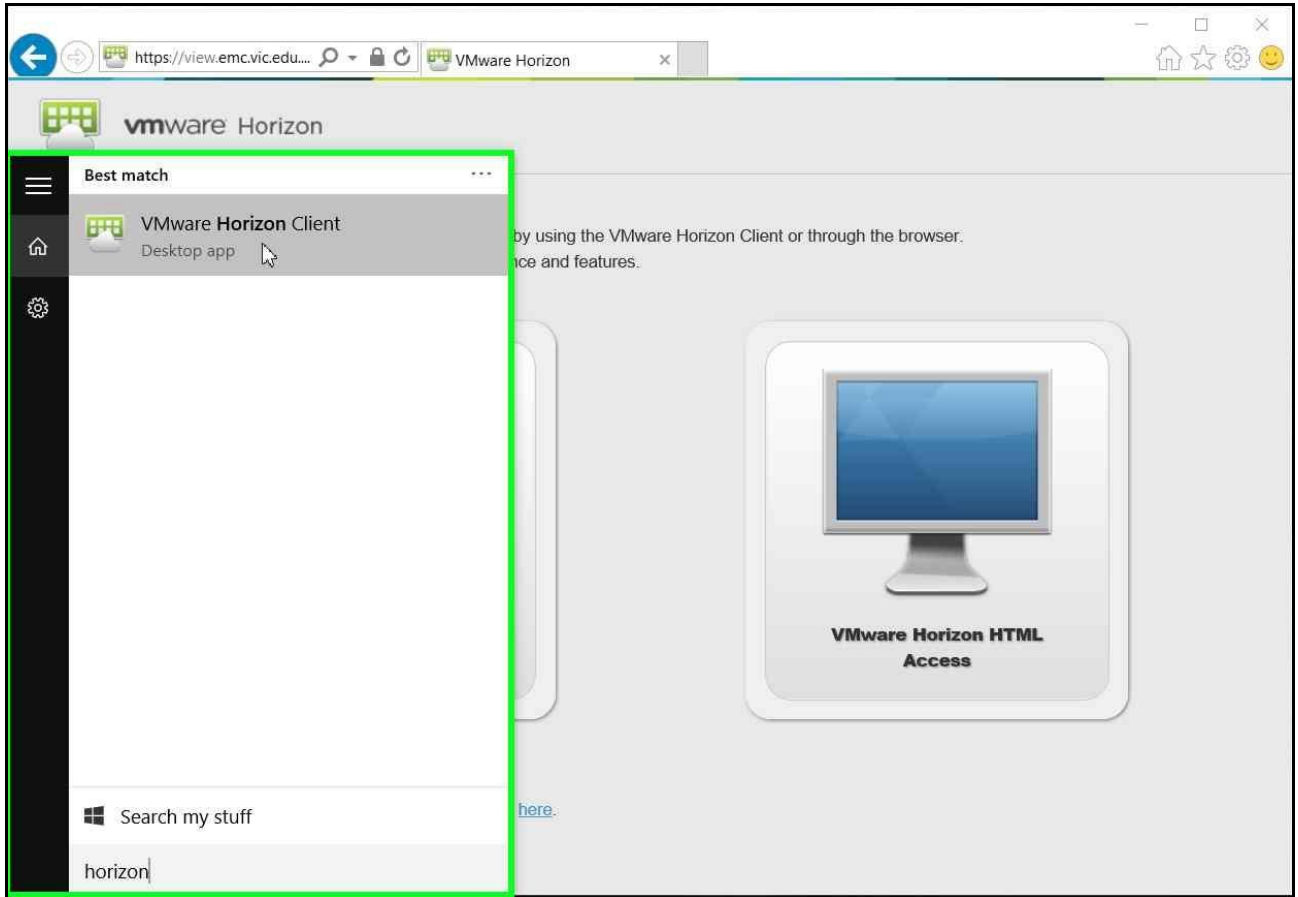
1. Go to <https://view.emc.vic.edu.au> and click the *Install VMware Horizon Client* link to begin the download



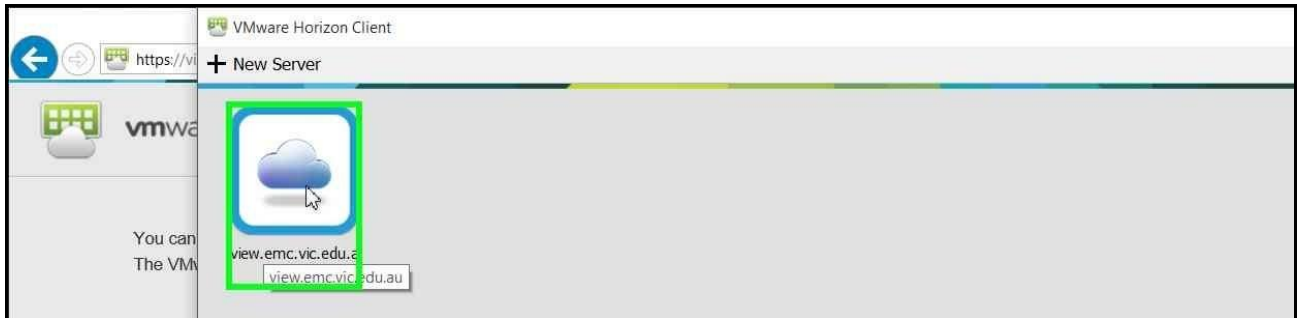
2. Open the file you downloaded above and begin the installation. Select all the default settings by clicking the Next button until you get to the server connection setting. Enter the following address: *view.emc.vic.edu.au*



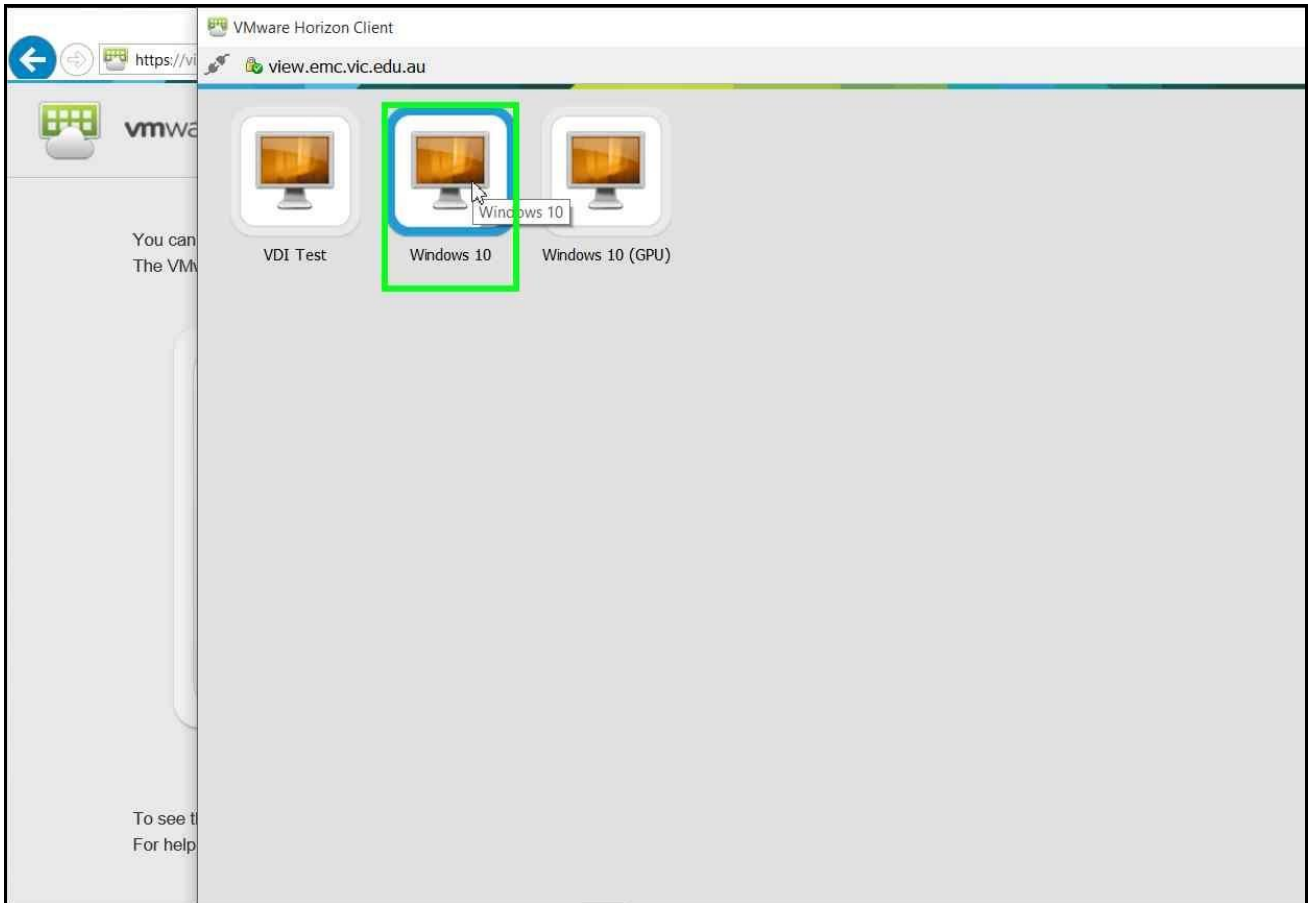
3. When the client has finished installing you will be prompted to restart your computer. After you have restarted and logged back in open up the Horizon client. You should see a shortcut on your desktop or you can search for it.



4. In the Horizon client, double click on the server connection *view.emc.vic.edu.au* and login with your EMC username and password.



5. Double click the virtual desktop connection for Windows 10. It will now open up a new window and login, it may take a minute to load up.



If you need further assistance with VMware Horizon please visit the ICT office.